

- ◆Large can
- ◆Screw Terminals
- ◆General Purpose
- ◆High Ripple
- ◆500 to 650Vdc Ratings
- ◆RoHS Compliant
- ◆5,000 Hours Lifetime at +85°C

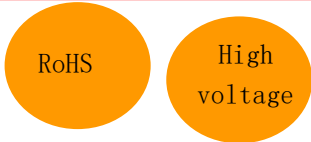


The LHV series is a general purpose, screw mount LHV grade series specifically designed to provide the ripple current capability and long life required for high reliability inverter applications. The LHV has an endurance rating of 5,000 hours at 85°C with the rated ripple current applied. The useful life can exceed 150,000 hours at 40°C and 1.5x the ripple current. These capacitors are available in a variety of high current English or Metric thread terminals. Mounting options include a three-footed clamp or bottom threaded stud. Custom designs are also available.

product description

- Screw terminals: high and low post, English and Metric thread.
- Capacitance range:1,200~12,000µF
- Voltage range:500~650Vdc
- Category temperature range:-40°C~+85°C
- Leakage current: 0.02CV(µA) or 5mA, whichever is smaller, after 5 minutes at 25°C.
- Standard capacitance tolerance:20%

- Endurance with ripple current:5000hours at85°C
- long life Large control equipment for high-speed train,mechanical equipment, military facility, large CNC integrated power supply etc



Protection AC/DC DC switching power supply. variable-frequency power sources. High power DC switching power supply
 Inverter. Aerospace power. Ships power.particularly within the fields of weapons, communications, sensors and protection systems.
 magnaflux high-voltage power supply

◆ SPECIFICATIONS

items	characteristics	
Category temperature Range	-40~+85°C (500~650 _{VDC})	
Rated voltage Range	500~650 _{VDC}	
Capacitance Tolerance	± 20% (M) 20°C/120HZ	
Leakage Current	I=0.02CV or 5mA, whichever is smaller I: Where, I : Max. leakage current (μA), C: Nominal capacitance (μF), Rated voltage (V) at 20°C after 5 minutes	
Dissipation Factor (tanδ)	0.25Max 20°C/120HZ	
Low Temperature characteristics	Capacitance change C (-25°C) / C (+20°C) ≥ 0.7 20°C/120HZ	
Insulation Resistance	When measured between the terminals that are connected to each other and to the mounting clamp on the insulating sleeve covering the case by using an insulation resistance meter of 500Vdc, the insulation resistance shall not be less than 100mΩ	
Insulation Withstanding Voltage	When a voltage of 2,000Vac is applied for 1 minute between the terminals that are connected to each other and to the mounting clamp on the insulating sleeve covering the case, there shall not be electrical damage.	
Endurance	The following specifications shall be satisfied when the capacitors are restored to 20°C after subjected to DC voltage with the rated ripple current is applied (the peak voltage shall not exceed the rated voltage) for 5,000 hours at 85°C.	
	Capacitance change	≤±20% of the initial value
	D.F. (tanδ)	≤300% of the initial specified value
	Leakage current	≤The initial specified value
Shelf Life	The following specifications shall be satisfied when the capacitors are restored to 20°C after exposing them for 500 hours at 85°C without voltage applied. Before the measurement, the capacitor shall be preconditioned by applying voltage according to Item 4.1 of JIS C 5101-4.	
	Capacitance change	≤±20% of the initial value
	D.F. (tanδ)	≤300% of the initial specified value
	Leakage current	≤The initial specified value

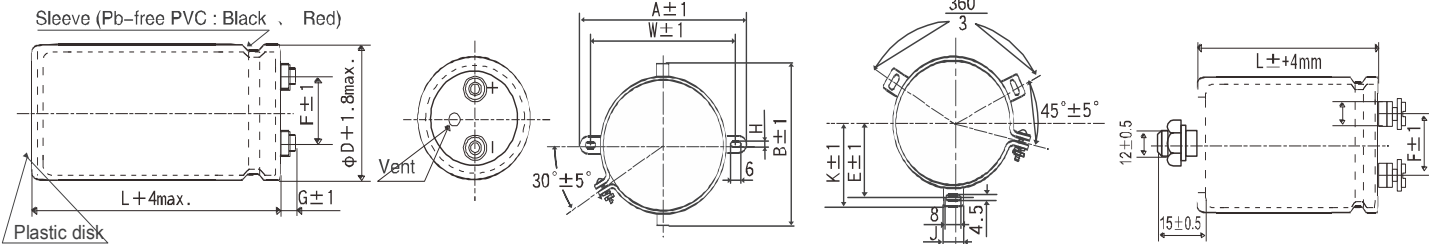
◆ DIMENSIONS[mm]

● Terminal Code : M5

● Mounting Clamp Code : B

● Mounting Clamp Code : C

● NO Mounting Clamp Code : N



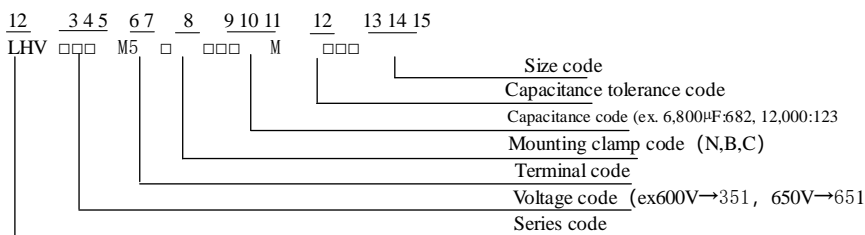
Ø50~ Ø63.5: G=6 Ø76.2~ Ø89: G=5

Screw specifications

Plus hexagon-headed screw M5*0.8*10 M6*1.0*10 Ø100 Maximum screw tightening torque

3.23N.m The screw and the mounting clamp are separately supplied and not attached to the product

◆ PART NUMBERING SYSTEM



Please refer to "Product code guide (screw-mount terminal type)"

ØD	A	B	W	H	F
35	58.0	44.0	48.0	3.5	12.7
50	78.0	64.0	68.0	4.5	22.4
63.5	90.0	76.0	80.0	4.5	28.0
76.2	104.5	90.0	93.5	4.5	31.5

ØD	E	K	F	J
50	32.5	37.0	14.0	22.4
63.5	38.1	43.5	28.0	14.0
76.2	44.5	50.0	31.5	14.0
89	50.8	56.5	31.5	16.0
100	56.5	63.4	41.5	18.0

SRANDRAD RATINGS

W. V [Vdc]	cap [μ F]	Case size D x L [mm]	tanδ 120HZ, 20°C	Rated ripple current(A ms/85°C, 1 20HZ)	Part NO.	W. V [Vdc]	cap [μ F]	Case size D x L [mm]	tanδ 120HZ, 20°C	Rated ripple current(Ams /85°C, 120HZ)	Part NO.	
500	1200	50*95	0.25	5.9	LHV501M5B122MC95	600	1800	63.5*125	0.25	9.30	LHV601M6C182MDC5	
	1500	50*115	0.25	7.2	LHV501M5B152MCB5		1800	76.2*95	0.25	9.10	LHV601M6C182ME95	
	1800	50*130	0.25	8.3	LHV501M5B182MCD0		2200	63.5*145	0.25	11.0	LHV601M6C222MDE5	
	2200	50*155	0.25	9.8	LHV501M5B222MCF5		2200	76.2*115	0.25	10.8	LHV601M6C222MEB5	
	2700	63.5*120	0.25	11.2	LHV501M6C272MDC0		2700	63.5*170	0.25	13.1	LHV601M6C272MDH0	
	3300	63.5*140	0.25	13.3	LHV501M6C332MDE0		2700	76.2*125	0.25	12.6	LHV601M6C272MEC5	
	3900	63.5*170	0.25	15.7	LHV501M6C392MDH0		3300	76.2*145	0.25	14.9	LHV601M6C332MEE5	
	3900	76.2*130	0.25	15.4	LHV501M6C392MED0		3900	76.2*170	0.25	17.3	LHV601M6C392MEH0	
	4700	76.2*155	0.25	18.1	LHV501M6C472MEF5		3900	89*130	0.25	14.2	LHV601M6C392MFD0	
	5600	76.2*170	0.25	20.8	LHV501M6C562MEH0		4700	76.2*190	0.25	20.0	LHV601M6C472MEK0	
	5600	89*130	0.25	17.1	LHV501M6C562MFD0		4700	89*155	0.25	16.6	LHV601M6C472MFF5	
	6800	89*155	0.25	20.0	LHV501M6C682MFF5		5600	89*170	0.25	19.1	LHV601M6C562MFH0	
	8200	89*190	0.25	24.4	LHV501M6C822MFK0		6800	89*190	0.25	21.3	LHV601M6C682MFF5	
	10000	89*220	0.25	28.2	LHV501M6C103MFF0		8200	89*220	0.25	23.2	LHV601M6C682MGN0	
	12000	100*220	0.25	32.9	LHV501M6C123MGN0		630	1000	63.5*130	0.25	6.0	LHV631M6C102MDD0
15000	100*250	0.25	39.8	LHV501M6C153MGR0	1200	76.2*115		0.25	6.7	LHV631M6C122MEB5		
550	1000	50*95	0.25	5.40	LHV551M5B102MC95	1500		76.2*130	0.25	8.1	LHV631M6C152MED0	
	1200	50*115	0.25	6.30	LHV551M5B122MCB5	1800		76.2*155	0.25	9.8	LHV631M6C182MEF5	
	1500	50*130	0.25	7.60	LHV551M5B152MCD0	2200		90*130	0.25	10.7	LHV631M6C222MFD0	
	1800	63.5*105	0.25	8.60	LHV551M6C182MDA5	2700		89*155	0.25	12.8	LHV631M6C272MFF5	
	2200	63.5*120	0.25	10.1	LHV551M6C222MDC0	3300		89*170	0.25	14.7	LHV631M6C332MFH0	
	2700	63.5*155	0.25	12.4	LHV551M6C272MDF5	3900		89*190	0.25	17.9	LHV631M6C392MKF0	
	2700	76.2*105	0.25	11.7	LHV551M6C272MEA5	4700		89*190	0.25	21.6	LHV631M6C472MKF0	
	3300	63.5*170	0.25	14.5	LHV551M6C332MDH0	5600		89*200	0.25	24.9	LHV631M6C472MG00	
	3300	76.2*130	0.25	14.2	LHV551M6C332MED0	6800		89*210	0.25	26.2	LHV631M6C472MGP0	
	3900	76.2*140	0.25	15.9	LHV551M6C392MEE0	8200		89*230	0.25	28.3	LHV631M6C472MGQ0	
	4700	76.2*170	0.25	19.1	LHV551M6C472MEH0	650		1000	63.5*100	0.25	6.30	LHV651M6C102MDA0
	4700	89*130	0.25	15.6	LHV551M6C472MFD0			1200	63.5*115	0.25	7.20	LHV651M6C122MDB5
	5600	89*155	0.25	18.2	LHV551M6C562MFF5			1500	63.5*130	0.25	8.60	LHV651M6C152MDD0
	6800	89*170	0.25	21.1	LHV551M6C682MFH0		1800	63.5*155	0.25	10.1	LHV651M6C182MDF5	
	8200	100*170	0.25	24.8	LHV551M6C822MGH0		2200	63.5*170	0.25	11.7	LHV651M6C222MDH0	
10000	100*200	0.25	29.4	LHV551M6C103MG00	2700		76.2*155	0.25	13.6	LHV651M6C272MEF5		
12000	100*250	0.25	32.1	LHV551M6C123MGR0	3300		76.2*170	0.25	15.8	LHV651M6C332MEH0		
600	1200	63.5*95	0.25	6.7	LHV601M6C122MD95		3900	89*170	0.25	15.3	LHV651M6C392MFH0	
	1500	63.5*115	0.25	8.00	LHV601M6C152MDB5		4700	89*190	0.25	18.4	LHV651M6C472MFK0	



SHENZHEN CAPSUN ELECTRONIC CO.,LTD
Tel :+86-755-2729 9931 Fax :+86-755-2729 9961
Add :Fuhai Science and Technology Industrial park , Fu Yong
Town ,shenzhen City, Guangdong Province , China

Super High voltage

LHV series

<http://www.szcapsun.com>

◆ RATED RIPPLE CURRENT MULTIPLIERS

Frequency Multipliers

Frequency (HZ)	50	120	300	1K	3K
coefficient	0.8	1.0	1.2	1.3	1.4

Note : The endurance of capacitors is reduced with internal heating produced by ripple current at the rate of halving the lifetime with every 5 to 10°C rise. When long life performance is required in actual use, the rms ripple current has to be reduced. Also, for the LHV series capacitors, using them at operating voltage less than their rated voltage can extend their lifetime. For details, please contact representative of capsun